

SAGE 300 SERVICES

GREYTRIX SOLUTION AND SERVICES FOR SAGE 300:

Greytrix offers best-in-class Sage 300 customizations and development services to Sage 300 business partners and Sage PSG worldwide. Greytrix team of highly experienced and certified Sage 300 Techno-functional consultants ensures that customer requirements are always met.

With vast expertise in Sage 300, we don't limit ourselves to development alone but provide you with a variety of choices from development to consulting to implementation. Greytrix is the one stop solution provider for any of your Sage 300 related needs.

WHY GREYTRIX?

Greytrix is 21+ years old Sage Champion Development Partner which is a one stop solution provider for all your Sage ERP and Sage CRM needs

- ◉ 1300+ man years of experience in Sage 300 Development and Consulting Services
- ◉ Team of experienced Techno-functional engineers and consultants having worked with 500+ unique Customers across 30+ different countries
- ◉ 250+ consultants out of which, 50+ work exclusively on Sage 300 Development

KEY OFFERINGS

- ◉ Bespoke Customizations in Sage 300 with upgradations to higher versions
- ◉ Dedicated migration team to migrate data from any ERP to Sage 300 Technical Expertise
- ◉ Onsite Development
- ◉ Techno-functional support (Both On-site and Off-site)
- ◉ Installation and Configuration
- ◉ Third party product development and integration

TECHNICAL EXPERTISE

Our Technical Expertise include, but is not limited to

- ◉ Sage 300 SDK and Views Development
- ◉ Crystal Report
- ◉ Sage 300 SDATA
- ◉ Sage Business Intelligence Reporting
- ◉ Sage 300 Screen Customization
- ◉ .NET API
- ◉ Sage 300 Macro Development
- ◉ SOAP Based Web Services

GREYMATRIX

GreyMatrix for Sage 300 is the comprehensive add-on for distributors and retailers. This add-on ensures effective inventory management as per style, size and colors, simplifying procurement, sales and distribution. This allows distributors and resellers to achieve transparency, traceability and accountability in their business operations with reduced time-to-market.

FEATURES

- ◉ Manage inventory according to style, size and color
- ◉ Grid Based Inventory System
- ◉ GreyMatrix Report Format

DOCUMENT NUMBERING

Greytrix Document Numbering for Sage 300 is a powerful add-on to standardize and deliver consistent document number generation. This add-on offers the enterprise with a simple and cost-effective document numbering system that makes critical documents easy to use, manage and secure making effective tracking of critical business documents.

FEATURES

- ◉ Document Number Mapping
- ◉ User defined, unique document numbering
- ◉ Transaction numbers based on Location | Account Set | Account Set / Location | Bank Code

DOCUMENT ATTACHMENT

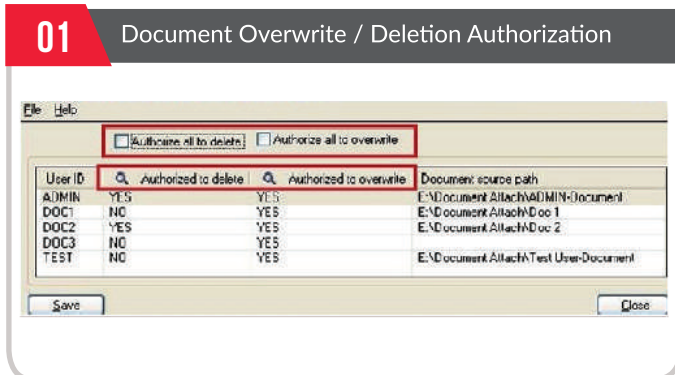
Greytrix Document Attachment add-on for Sage 300 gives accounting personnel the benefit of accessing important documents and attaching them at the click of a mouse button. This add-on streamlines business processes, centralizes documentation on a single platform with data integrity, making paperless documentation possible.

FEATURES

- ◉ Simplified document tracking and viewing historic transactions
- ◉ Document delete authorization
- ◉ Document overwrite authorization

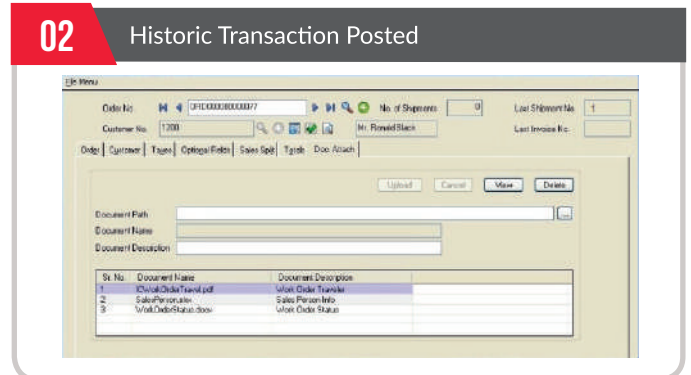
01

Document Overwrite / Deletion Authorization



02

Historic Transaction Posted



THREE WAY PO MATCHING

Greytrix Sage 300 Three way Purchase Order matching is an add-on that highlights the discrepancies in the three important documents of the purchasing process – Purchase Orders, Order Receipts, and Invoices. The add-on will cross-check the item order quantity with the receipt quantity and if the latter is more than the former, it alerts the user with the error notification.

FEATURES

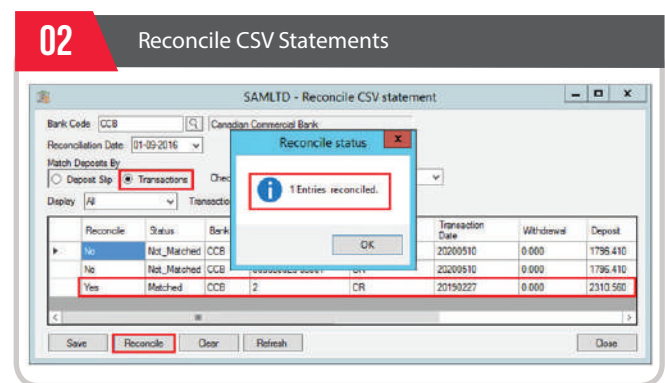
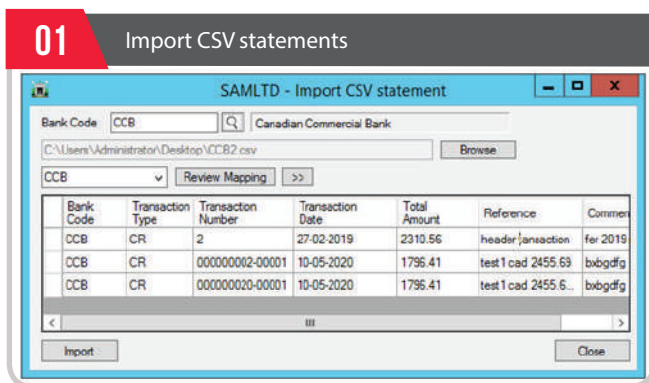
- ◉ Quick Verification of item order quantity with receipt quantity
- ◉ Easily configurable validation rule
- ◉ Notification of automated alerts in case of discrepancies detected in Quantity

AUTO BANK RECONCILIATION

Greytrix Sage 300 Auto Bank Reconciliation add-on automates account balance and transaction detail by giving users the option of automatically reconciling bank statements in CSV format in addition to the standard OFX format supported by Sage 300 ERP. This includes importing data from ERP and bank files, comparing account balances and transactions between bank statements and accounting records in Sage 300.

FEATURES

- ◉ Reconciles bank statement with data from different formats in a single click
- ◉ Faster reconciliation process
- ◉ Automatic marking of cleared cheque
- ◉ Minimizes manual errors during bank reconciliation
- ◉ Automated data entry and improved data integrity



BILL OF LADING

Greytrix Bill Of Lading is a comprehensive product for Sage 300 ERP that allows users to create, view, e-mail, and print a formatted bill of lading that serves as a legal document between a shipper and a carrier. Bill of lading for Sage 300, picks up orders, or shipments, and generates bill for the selected order. This ensures authenticity for exporters to receive payments and for importers to receive the merchandise they order.

FEATURES

- ◉ Easy creation of bill of lading against Orders and Shipments
- ◉ Create bill of lading including multiple Orders and Shipments
- ◉ Comprehensive reporting with standard information, like total weight, nature of goods, total number of packages, address of shipper, consignee and bill-to locations

Greytrix offers GUMU™ for Salesforce - Sage 300 Integration, a best of breed solution for organizations to enhance their customer interaction. With Salesforce and Sage 300 integration you have actionable customer information. 24x7x365 accessibility provides a real edge to virtual workforces, it enables employees to work without being tied to their office desk, desktop or office servers. Instead, employees can contact customers and prospects on-the-go and access real-time data on their personal portable devices such as mobiles or tablets. By delivering more actionable and frequent customer insights, employees can increase productivity across the board. Thereby optimizing your investments in Sage 300 and Salesforce.

BENEFITS

- ⦿ Based on real-time data, Management can make informed decisions & identify business opportunities
- ⦿ Sales person can extract client information in real-time and on the go
- ⦿ Enhanced client experience due to faster resolution of queries and personalized responses
- ⦿ Increased employee productivity due to data consistency and elimination of data duplication

FEATURES

- ⦿ **Real-time Bi-directional Data Sync:**
GUMU™ allows Accounts - Customer data sync on real-time basis between Sage 300 and Salesforce. You can choose, as to which system should act as the “Master” and thus controls the data flow. This helps to maintain data consistency and reliability between the two systems.
- ⦿ **Authorization Control:**
GUMU™ Security Matrix empowers System Administrators by allowing them to set different access levels with prescribed user privileges. This provides IT with the power to secure data and control systems effectively.
- ⦿ **Flexibility to configure:**
Add or Create new Inquiries in Salesforce system as per your business needs based on the data in Sage 300. Modify existing Inquiries to include custom fields in Salesforce reflecting associated Sage 300 data.
- ⦿ **Linking / Un-Linking Customers:**
Link / Un-Link existing accounts-customer data between the two systems to avoid data duplication and maintain consistency between the systems.
- ⦿ **Real-time Inquiries:**
Important Quote, Sales Order, Shipment, Invoices, Credit Note, Payment Receipts against Invoices and Sales summary can be viewed on user-friendly Salesforce tab for a particular customer. You can add any custom inquiries to the system as per your business needs.
- ⦿ **Easy to Promote:**
GUMU™ allows the Sales Team using Salesforce to easily promote Customers and Sales Orders from Salesforce to Sage 300. Thus reducing time and efforts of data entry to sage 300.
- ⦿ **Entity Synchronization:**
Gain flexibility to map/import any custom or standard Sage 300 entity data into Salesforce standard/custom objects. Perform further analysis using Wave, Dashboard reporting or visual charts etc. Reformat/filter/restructure existing entity without disturbing its original form or use it for specific purpose by setting schedules to sync entities as per your need with the cloning feature. Support multiple sync of entities with processes running in the background. Log tracking provides you with complete progress track.